



STR Analytics
11001 West 120th Ave., Suite 250
Broomfield, CO 80021

Phone: +1 (615) 824-8664
Fax: +1 (303) 449 6587
www.STR.com

Sample Hotel Monthly Bandwidth Report

For the Month of: February 2010

STR #: XXXXX

Date Created: March 2011

Table of Contents

Bandwidth TY
Bandwidth LY
Response
Help

Tab

1
2
3
4
5

sample

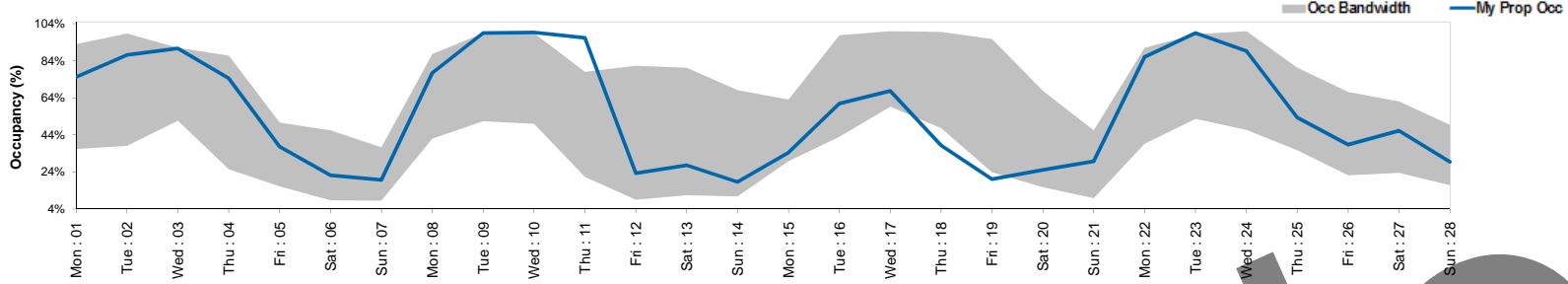


Tab 2 - Bandwidth Analysis: February 2010

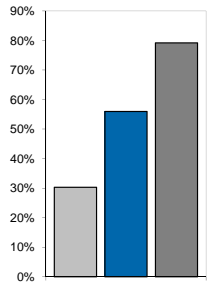
Sample Hotel
STR # XXXXXX

For the Month of: February 2010 Monthly Competitive Set Data Excludes Subject

Occupancy (%) Bandwidth

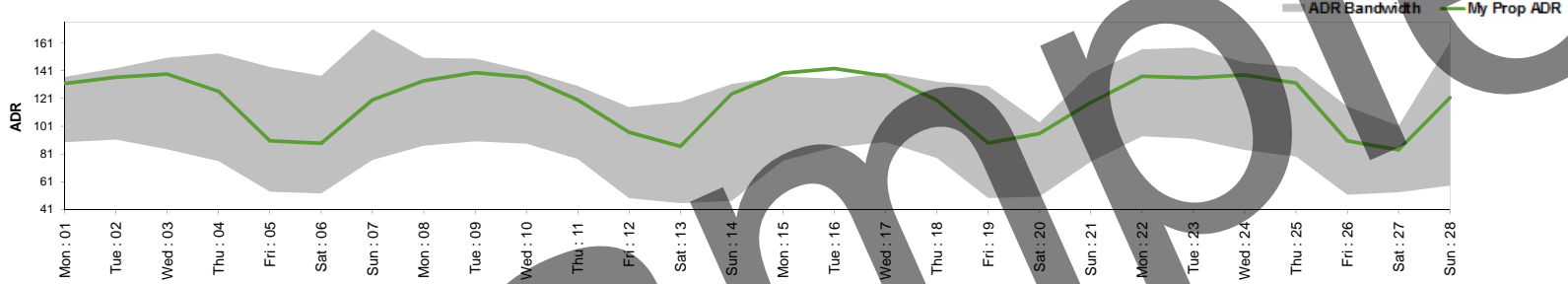


Feb Occ Roll Up

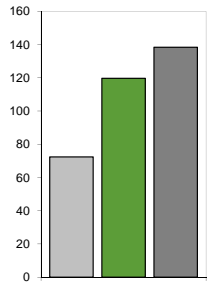


My Prop Occ Rank:	2 of 9	2 of 9	2 of 9	2 of 9	4 of 9	5 of 9	7 of 9	3 of 9	1 of 9	1 of 9	1 of 9	7 of 9	7 of 9	6 of 9	8 of 9	6 of 9	5 of 9	9 of 9	9 of 9	8 of 9	5 of 9	3 of 9	1 of 9	3 of 9	6 of 9	4 of 9	4 of 9	6 of 9
-------------------	--------	--------	--------	--------	--------	--------	--------	--------	--------	--------	--------	--------	--------	--------	--------	--------	--------	--------	--------	--------	--------	--------	--------	--------	--------	--------	--------	--------

ADR Bandwidth

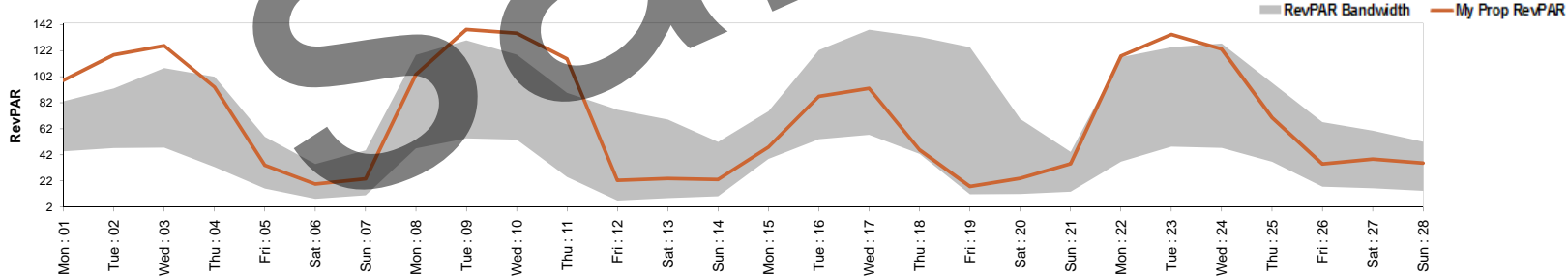


Feb ADR Roll Up

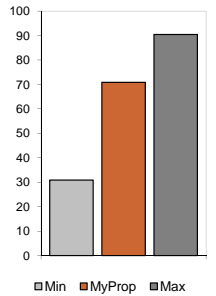


My Prop ADR Rank:	3 of 9	2 of 9	2 of 9	3 of 9	6 of 9	5 of 9	3 of 9	3 of 9	2 of 9	2 of 9	3 of 9	2 of 9	3 of 9	3 of 9	1 of 9	1 of 9	2 of 9	3 of 9	6 of 9	3 of 9	3 of 9	2 of 9	2 of 9	2 of 9	2 of 9	3 of 9	4 of 9	3 of 9	4 of 9
-------------------	--------	--------	--------	--------	--------	--------	--------	--------	--------	--------	--------	--------	--------	--------	--------	--------	--------	--------	--------	--------	--------	--------	--------	--------	--------	--------	--------	--------	--------

RevPAR Bandwidth



Feb RevPAR Roll Up



My Prop RevPAR Rank:	1 of 9	1 of 9	1 of 9	2 of 9	4 of 9	5 of 9	4 of 9	2 of 9	1 of 9	1 of 9	1 of 9	6 of 9	7 of 9	5 of 9	4 of 9	3 of 9	4 of 9	7 of 9	8 of 9	7 of 9	4 of 9	1 of 9	1 of 9	3 of 9	4 of 9	4 of 9	3 of 9	5 of 9
----------------------	--------	--------	--------	--------	--------	--------	--------	--------	--------	--------	--------	--------	--------	--------	--------	--------	--------	--------	--------	--------	--------	--------	--------	--------	--------	--------	--------	--------

* Days when the rankings are Shaded are designated as "Weekends" (Friday and Saturday)

Potential Revenue Gain*
186,500.00

Potential Revenue Loss*
315,135.38

*Calculated room revenue gain or loss had my property been the daily RevPAR leader or laggard for entire month.

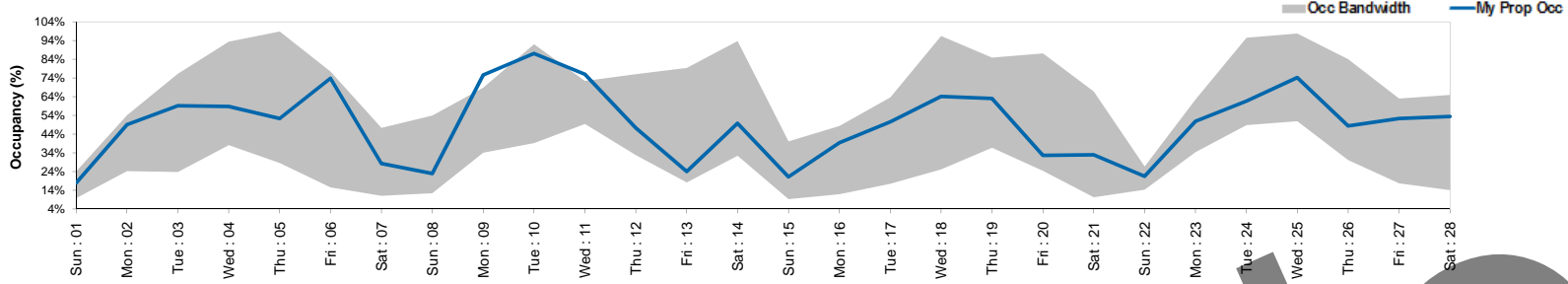
STR Analytics

Tab 3 - Bandwidth Analysis: February 2009

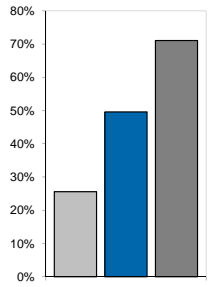
Sample Hotel
STR # XXXXXX

For the Month of: February 2010 Monthly Competitive Set Data Excludes Subject

Occupancy (%) Bandwidth

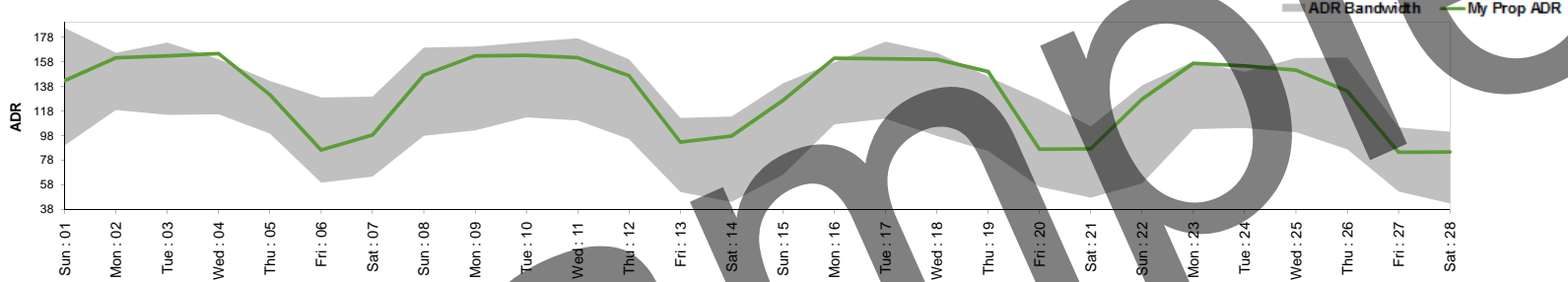


Feb Occ Roll Up

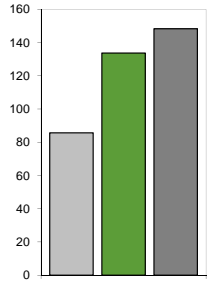


My Prop Occ Rank:	2 of 9	4 of 9	3 of 9	5 of 9	5 of 9	2 of 9	4 of 9	6 of 9	1 of 9	2 of 9	1 of 9	4 of 9	8 of 9	5 of 9	7 of 9	4 of 9	7 of 9	4 of 9	3 of 9	6 of 9	4 of 9	4 of 9	4 of 9	5 of 9	4 of 9	4 of 9	4 of 9	4 of 9
-------------------	--------	--------	--------	--------	--------	--------	--------	--------	--------	--------	--------	--------	--------	--------	--------	--------	--------	--------	--------	--------	--------	--------	--------	--------	--------	--------	--------	--------

ADR Bandwidth

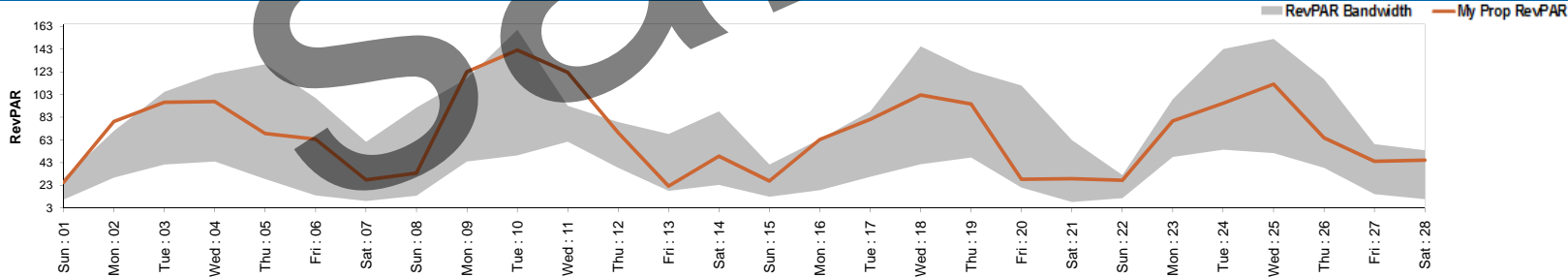


Feb ADR Roll Up

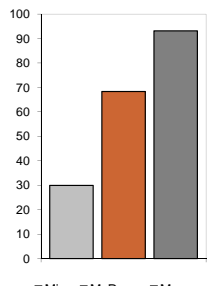


My Prop ADR Rank:	2 of 9	2 of 9	2 of 9	1 of 9	3 of 9	6 of 9	3 of 9	2 of 9	2 of 9	2 of 9	2 of 9	2 of 9	3 of 9	3 of 9	2 of 9	1 of 9	2 of 9	2 of 9	1 of 9	5 of 9	4 of 9	3 of 9	2 of 9	1 of 9	3 of 9	4 of 9	5 of 9	5 of 9
-------------------	--------	--------	--------	--------	--------	--------	--------	--------	--------	--------	--------	--------	--------	--------	--------	--------	--------	--------	--------	--------	--------	--------	--------	--------	--------	--------	--------	--------

RevPAR Bandwidth



Feb RevPAR Roll Up



My Prop RevPAR Rank:	2 of 9	1 of 9	2 of 9	4 of 9	5 of 9	3 of 9	4 of 9	3 of 9	1 of 9	2 of 9	1 of 9	2 of 9	7 of 9	4 of 9	4 of 9	2 of 9	4 of 9	2 of 9	2 of 9	6 of 9	4 of 9	3 of 9	2 of 9	3 of 9	3 of 9	4 of 9	2 of 9	3 of 9
----------------------	--------	--------	--------	--------	--------	--------	--------	--------	--------	--------	--------	--------	--------	--------	--------	--------	--------	--------	--------	--------	--------	--------	--------	--------	--------	--------	--------	--------

* Days when the rankings are Shaded are designated as "Weekends" (Friday and Saturday)

Potential Revenue Gain*
205,759.71

Potential Revenue Loss*
300,238.23

*Calculated room revenue gain or loss had my property been the daily RevPAR leader or laggard for entire month.

STR Analytics

Tab 5 - Help

Glossary of Terms

Definitions

ADR (Average Daily Rate) -

Room revenue divided by rooms sold.

Bandwidth -

The range of performance among the competitive set indicated by the high and low performance of individual competitors on each day.

Competitive (Comp) Set -

A peer group of competitive hotels selected by hotel management to benchmark the subject property's performance.

Exchange Rate -

The factor used to convert revenue from US Dollars to the local currency. Reports display the daily exchange rates for each day shown. STR obtains exchange rate data from Oanda.com. Any aggregated number in the report (MTD, Running 28 Day, Current Week) uses the exchange rate of each relative day when calculating the data.

TY -

This Year.

LY -

Last Year.

Max -

The highest performance possible for the period, assuming a property operated at the highest point of the bandwidth during the period.

Min -

The lowest performance possible for the period, assuming a property operated at the lowest point of the bandwidth during the period.

Potential Revenue Gain -

This quantitative measurement indicates the potential revenue available in the market IF the subject property had achieved the top RevPAR performance each night of the period. While it is difficult to achieve this accomplishment consistently, depending on the relevance of the competitive set, it could be considered an appropriate benchmark. This number also represents the amount of additional revenue that is available in the comp set, which is significant to understand the maximum revenue potential available in the comp set.

Potential Revenue Loss -

Similar to Potential Revenue Gain, this quantitative benchmark indicates how much revenue the subject property would have lost if they were the laggard RevPAR performance for each night of the period. Converse to the potential gain figure, this figure benchmarks the laggard performance and illustrates how the subject property is performing relative to the minimum performances achieved during the period.

Occupancy -

Rooms sold divided by rooms available multiplied by 100.

Percent Change (% Chg) -

Amount of growth – up, down or flat – this period versus the same period last year (day, week, running 28 days, running month-to-date). Calculated as $((TY-LY)/LY)*100$.

RevPAR (Revenue per Available Room) -

Room revenue divided by rooms available.

FAQ

How is my hotel performing versus competition?

The monthly Bandwidth report provides timely occupancy, average room rate, revenue per available room benchmarking of your hotel's performance versus your own selected competitors.

Is my hotel's data included in the competitive numbers?

Your hotel's data is excluded from the competitive set performance (represented by the grey band) and is represented by the blue line (occupancy) green line (average rate) and orange lines (RevPAR) on the graphs.

How does STR determine currency and exchange rates?

Currency is user-defined and is displayed at the top of the report. STR obtains exchange rate data from Oanda.com.

Why is there a gap in the grey band?

Due to isolation or insufficiency, your competitive set lacked data for the day(s) in question, resulting in the missing gap.

Why does my competitive set have such a wide band?

A wide bandwidth indicates that there is a broad range of performance among the properties in your competitive set. This could have several implications for the relevance of your competitive set. If you have additional questions about the relevance of your set, please contact info@stranalytics.com.

What if there are blanks in my competitive set numbers?

Your competitive set did not include sufficient data for reporting. A minimum of three (3) hotels must report data in order for STR to provide competitive set performance.

What if there is one hotel that consistently leads or lags the competitive set in either Occupancy, ADR or RevPAR?

In the case that there is a consistent leader or laggard in the competitive set the bandwidth data will be removed due to isolation and performance confidentiality. If you do not receive the bandwidth data there will be a note indicating the isolation error at the top of the graph.

Who can I contact if I have more questions?

Check out the glossary and FAQ at www.smithtravelresearch.com or e-mail info@smithtravelresearch.com.

What does the Insufficient Performance for Some data points indicate?

This alert message indicates that for certain days in your report the competitive set did not report sufficient data to show the bandwidth. If this is the case in your report the "band" for that day will actually equal your property's performance for that day. As a result, the band disappears and you will only see the subject property line."